

RAIDON



InTANK iR8022-S3

Hardware RAID Module for 2 x M.2 SATA SSD

LCD Display and LED Indicators for System Monitoring During Operation

iR8022-S3 can install two M.2 SATA Solid State Drives (SSD) to backup and protect the data. And under RAID 1 mode, there is no need to worry about the system failure due to one single SSD failure.

iR8022-S3 use a SATA III (6Gbps) RAID chipset. The high speed of the iR8022-S3 brings you higher efficiency and it will not affect performance even if you install the M.2 SATA SSD. This allows the iR8022-S3 to work perfectly with high-speed M.2 SATA SSD, and can easily handle large image files or graphic design files at the same time.

iR8022-S3 supports the disk hot-swap function under RAID 1 mode. Built-in LCD and LED display functions can monitor and display the status of

M.2 SATA solid state drives (SSD). The compact design of iR8022-S3 only occupies a 5.25" CD-ROM slot (1U) in the computer, which can provide you with the complete functions you need in the server, industrial control, medical equipment, and even the workstation environment.

Features

1. LCD for System Monitoring
2. Supports Hardware RAID 1/0
3. Support 2 x M.2 SATA SSD
4. Support 2242/2260/2280 M.2 SATA SSD Dimension
5. GUI can show the disk S.M.A.R.T. information (Windows only)
6. One CD-Rom (1U) Dimension

User-friendly Display

iR8022-S3 is equipped with clear readable LCD and LED indicators for system monitoring during operation, therefore, users can easily grasp the status of the system at all times. Moreover, it comes with visual and audio alarms whenever failure occurs.



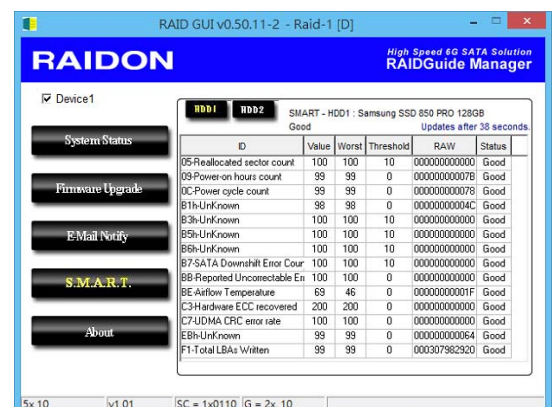
Good Heat Dissipation Extend the Life of the M.2 SATA SSD

iR8022-S3 is equipped with a 4cm silent fan, by constantly creating air flow, heat generated by the disk can be easily taken away. This maintains the normal operating temperature of the disk at all times and to extend the life of disks that will properly protect your data.

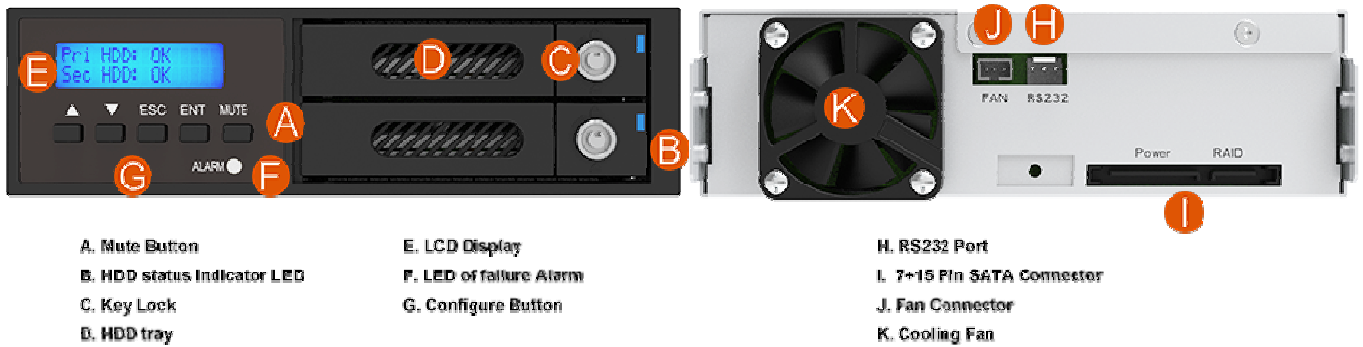


GUI can Show the Disk S.M.A.R.T Information

iR8022-S3 provides the GUI that can show the S.M.A.R.T (Self Monitoring, Analysis, and the Reporting Technology) Information of disks. Just open the RAIDGuide Manager Utility, user can using it to know the disks' status, and could even to replace any disk which is might be damaged in advance to help an even better protection for all your data.



Product Appearance Description



- A. Mute Button
- B. HDD status Indicator LED
- C. Key Lock
- D. HDD tray

- E. LCD Display
- F. LED of failure Alarm
- G. Configure Button

- H. RS232 Port
- I. 7+15 Pin SATA Connector
- J. Fan Connector
- K. Cooling Fan

Interfaces	1 x SATA III (6Gbps)
Compatible Drive	2 x M.2 SATA Solid State Drive(SSD)(2242/2260/2280)
Certification	CE / FCC
RAID Mode	RAID 1 / RAID 0
Operating System Support	Windows, Linux
Cooling Fan	1 x 4cm Fan
Electrical and Operating Requirements	<ul style="list-style-type: none"> *Line voltage: 12V+5V, DC *Operating temperature: 0° to 40° C (32° to 104° F) *Storage temperature: -20° to 47° C (-4° to 116° F) *Relative humidity: 5% to 95%, no condensing
Size	Height: 43 mm Width: 140 mm Depth: 148 mm
Product Code	EAN : 4713227441537 UPC : 884826506096
Carton	10 pcs per carton
Package Accessories	1 x iR8022 1 x SATA Cable 1 x Accessory 1 x Quick Installation Guide